



UL or ATEX Certified for Hazardous Areas



GPR-1800 IS PPM Oxygen Transmitter

Loop Powered PPM O2 Transmitter

→ Optional Modular Sample Systems

Exia



**UL Certified
File E343386**

**Class I, Division 1, Groups C and D
T4 T_{amb} -20°C to +50°C**

**ATEX Certified - Directive 94/9/EC
Examination Cert: INERIS 07ATEX0025X**



**II 2 G
Ex d IIB or d IIB+H2 T6 or T5**



0080

**ISO 9001:2008 Certified
INTERTEK Certificate No. 485**



Technical Specifications *

- Accuracy: < 2% of FS range under constant conditions
- Analysis: 0-10, 0-100, 0-1000 PPM, 0-1%, 0-25% (CAL) FS
Auto-ranging or manual lock on a single range
- Application: Oxygen analysis in inert, hydrocarbon, helium, hydro-
gen, mixed and acid (CO₂) gas streams
- Approvals: Certified for use in hazardous areas - see lower right
UL: United States: UL 1203, UL 913, UL 508
Canada: CAN/CSA C22.2 No. 30-M1986,
CAN/CSA C22.2 No. 157-92,
CAN/CSA C22.2 No. 14-10
ATEX: Directive 94/9/EC
- Area Classification: Certified for use in hazardous areas - see lower right
- Alarms: None
- Calibration: 3 month interval using certified span gas (preferred for
fastest online time) or air with O₂ value approximating
80% of full scale range balance N₂
- Compensation: Temperature
- Connections: 1/8" compression tube fittings
- Controls: Water resistant keypad; menu driven range selection,
calibration and system functions
- Display: Graphical LCD 2.75" x 1.375"; resolution 0.01 PPM;
displays real time ambient temperature and pressure
- Enclosure: NEMA Type 3R suitable for rain in outdoor applications
- Flow: Not flow sensitive; recommended flow rate 1-2 SCFH
- Linearity: ±1% of full scale
- Pressure: Inlet - regulate to 5-30 psig to deliver 1-2 SCFH flow;
vent - atmospheric
- Power: 12-24 VDC
- Response Time: 90% of final reading in 10 seconds
- Sample System: Sample flow meter; options available, see other side
- Sensitivity: < 0.5% of FS range
- Sensor Model: GPR-12-333 for non-acid (CO₂) gas streams
XLT-12-333 for gases containing > 0.5% CO₂
- Sensor Life: 24 months in < 1000 PPM O₂ at 25°C and 1 atm
- Signal Output: 4-20mA
- Operating Range: -10 °C to 45°C (GPR sensor); -20° to 45°C (XLT)
- Warranty: 12 months analyzer; 12 months sensor
- Wetted Parts: Stainless steel

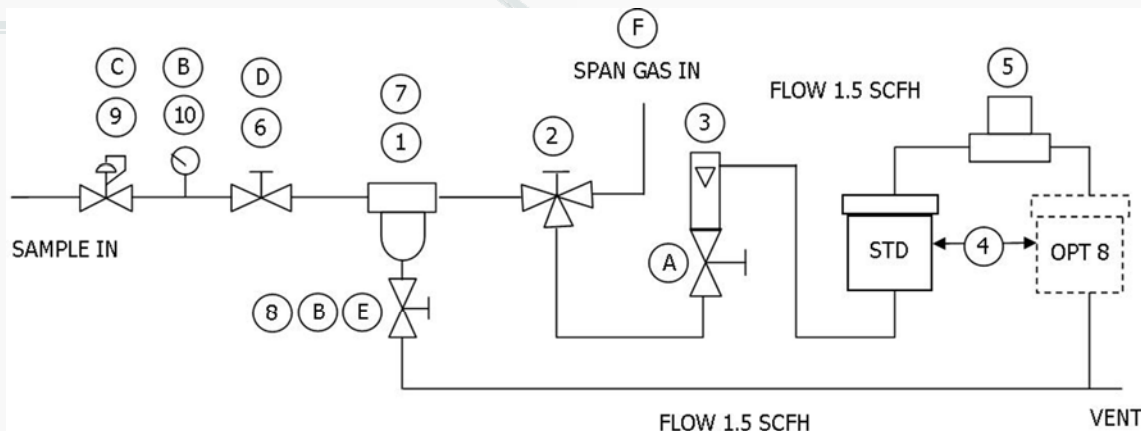
Optional Equipment

Sample conditioning systems (see back page) - Contact factory

* Specifications subject to change without notice



Modular Sample System for Hazardous Area Applications



A-3393 STANDARD CONFIGURATION

- * B-3359 SAMPLE PANEL (NOT SHOWN)
- 1. FLTR-1002-2 FILTER COALESCING
- 2. VALV-1002 VALVE SS 3-WAY SAMPLE/SPAN
- 3. FMTR-1007-1 FLOW METER, INTEGRAL VALVE
- 4. B-3247-1 SCRUBBER H2S CLEAR POLYCARB 2.5" ID
- 5. B-3310-A-18 SENSOR HOUSING ASSEMBLY SS
- * FITN-1016 3x BULKHEAD UNION 1/8" TO 1/4" SAMPLE, SPAN, VENT CONNECTIONS

A-3393-1 NO H2S SCRUBBER OPTION:

- DELETE 4. B-3247-1 SCRUBBER H2S CLEAR POLYCARB 2.5" ID

A-3393-2 CONTINUOUS DRAIN OPTION:

- ADD 6. VALV- VALVE SS 2-WAY METERING
- REPLACE 1004 FILTER COALESCING, FNPT DRAIN
- ADD 7. FLTR-1024 VALVE PLASTIC 2-WAY DRAIN
- 8. VALV- 1033

A-3393-3 NO H2S SCRUBBER WITH CONTINUOUS DRAIN OPTION:

- COMBINE OPTIONS 1 & 2

A-3393-4 PRESSURE REGULATOR & GAUGE OPTION:

- REPLACE B-3358 SAMPLE PANEL (REPLACES B-3359)
- ADD 9. REG-1013 PRESSURE REGULATOR SS 300 PSI MAX
- ADD 10. REG-1008 GAUGE

A-3393-5 NO H2S SCRUBBER WITH PRESSURE REGULATOR & GAUGE OPTION:

A-3393-6 PRESSURE REGULATOR & GAUGE WITH CONTINUOUS DRAIN OPTION:

- COMBINE OPTIONS 4 & 2

A-3393-7 NO H2S SCRUBBER WITH PRESSURE REGULATOR & GAUGE WITH CONTINUOUS DRAIN OPTION:

- COMBINE OPTIONS 1, 4 & 2

A-3393-8 STANDARD CONFIGURATION WITH H2S SCRUBBER LOCATED DOWNSTREAM OF THE H2S SENSOR (GPR-7500 only)

SET-UP INSTRUCTIONS:

- A. OPEN VALVE
- B. CLOSE VALVE
- C. SET REGULATOR, 20-30 PSIG
- D. OPEN VALVE AND SET FLOW METER (3) TO 3 SCFH
- E. OPEN VALVE UNTIL FLOW METER (3) READS 1.5 SCFH
- F. SWITCH VALVE (2) TO SPAN, SET EXTERNAL SPAN PRESSURE REGULATOR TO SAMPLE PRESSURE AND OPEN EXTERNAL SPAN VALVE UNTIL FLOW METER (3) READS 1.5 SCFH. REVERSE SWITCH OF VALVE (2) TO RETURN TO SAMPLE MODE.

UL or ATEX Certified for Hazardous Areas



**GPR-1800 IS
PPM Oxygen Transmitter**